

# LE 517

## Data Communications and Networks

Week 14:- Additional Network Protocols

By

Dr. Piya Techateerawat

## Additional Network Protocols

- TCP Applications
  - Client-Server Model
  - Virtual Terminal
  - TELNET
  - File Transfer
  - SNMP
- Integrated Services Digital Network (ISDN)
  - ISDN Architecture
  - ISDN Protocols

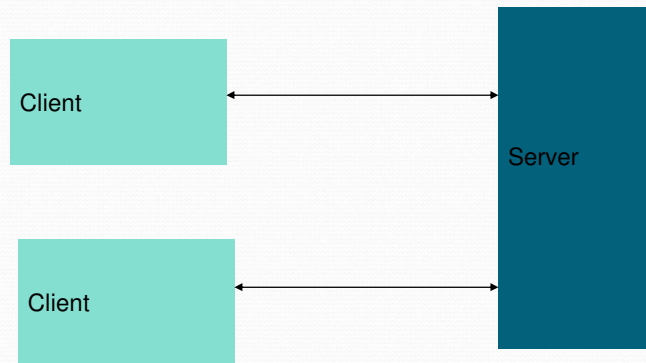
## Additional Network Protocols

- **TCP Applications**
  - Client-Server Model
  - Virtual Terminal
  - TELNET
  - File Transfer
  - SNMP
- Integrated Services Digital Network (ISDN)
  - ISDN Architecture
  - ISDN Protocols

## Additional Network Protocols

- TCP Applications
  - **Client-Server Model**
  - Virtual Terminal
  - TELNET
  - File Transfer
  - SNMP
- Integrated Services Digital Network (ISDN)
  - ISDN Architecture
  - ISDN Protocols

## Client-Server Model



## Client-Server Model

- Application
  - File Server
  - Print Server
  - Communication Server
  - ...

## Client-Server Model

- RPC (Remote Procedure Call)
  - Client & Server could be different computers
  - Client must pass all parameter
  - Server organize the request

## Additional Network Protocols

- TCP Applications
  - Client-Server Model
  - **Virtual Terminal**
  - TELNET
  - File Transfer
  - SNMP
- Integrated Services Digital Network (ISDN)
  - ISDN Architecture
  - ISDN Protocols

## Virtual Terminal

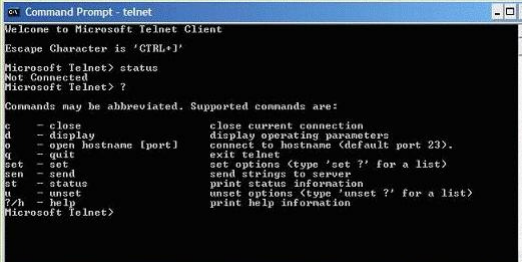
- Refer to Client-Server model
  - Application/Data/Software to update information on server.
  - This should be real-time or transaction based?
- E.g. edit text file on server
  - Every typing must be update on server?
  - It could be wait until finish and save the complete file.
  - Alike the accounting, database and etc.

## Additional Network Protocols

- TCP Applications
  - Client-Server Model
  - Virtual Terminal
  - **TELNET**
  - File Transfer
  - SNMP
- Integrated Services Digital Network (ISDN)
  - ISDN Architecture
  - ISDN Protocols

# TELNET

- TELNET is virtual terminal protocol which designed for TCP/IP



```
Command Prompt - telnet
Welcome to Microsoft Telnet Client
Escape Character is 'CTRL+'
Microsoft Telnet> status
Not Connected
Microsoft Telnet> ?
Commands may be abbreviated. Supported commands are:
c      - close          close current connection
d      - display       display operating parameters
o      - open hostname [port] connect to hostname (default port 23).
q      - quit          exit telnet
set    - set           set options (type 'set ?' for a list)
send  - send          send strings to server
st     - status        print status information
unset - unset          unset options (type 'unset ?' for a list)
?/h   - help          print help information
Microsoft Telnet>
```

# TELNET

- Please refer WAN lecture for architecture.

# Additional Network Protocols

- TCP Applications
  - Client-Server Model
  - Virtual Terminal
  - TELNET
  - **File Transfer**
  - SNMP
- Integrated Services Digital Network (ISDN)
  - ISDN Architecture
  - ISDN Protocols

# File Transfer

- FTP protocol

<b>bye</b>	to exit the FTP environment (same as quit)
<b>cd</b>	to change directory on the remote machine
<b>close</b>	to terminate a connection with another computer
<b>close brubeck</b>	closes the current FTP connection with brubeck, but still leaves you within the FTP environment
<b>delete</b>	to delete (remove) a file in the current remote directory (same as rm in UNIX)
<b>get</b>	to copy one file from the remote machine to the local machine
<b>get ABC DEF</b>	copies file ABC in the current remote directory to (or on top of) a file named DEF in your current local directory.
<b>get ABC</b>	copies file ABC in the current remote directory to (or on top of) a file with the same name, ABC, in your current local directory.
<b>help</b>	to request a list of all available FTP commands
<b>lcd</b>	to change directory on your local machine (same as UNIX cd)
<b>ls</b>	to list the names of the files in the current remote directory
<b>mkdir</b>	to make a new directory within the current remote directory
<b>mget</b>	to copy multiple files from the remote machine to the local machine; you are prompted for a y/n answer before transferring each file
<b>mget *</b>	copies all the files in the current remote directory to your current local directory, using the same filenames. Notice the use of the wild card character, *
<b>put</b>	to copy multiple files from the local machine to the remote machine; you are prompted for a y/n answer before transferring each file
<b>open</b>	to open a connection with another computer
<b>open brubeck</b>	opens a new FTP connection with brubeck; you must enter a username and password for a brubeck account (unless it is to be an anonymous connection).
<b>put</b>	to copy one file from the local machine to the remote machine
<b>pwd</b>	to find out the pathname of the current directory on the remote machine
<b>quit</b>	to exit the FTP environment (same as bye)
<b>rmdir</b>	to remove (delete) a directory in the current remote directory

## Additional Network Protocols

- TCP Applications
  - Client-Server Model
  - Virtual Terminal
  - TELNET
  - File Transfer
  - **SNMP**
- Integrated Services Digital Network (ISDN)
  - ISDN Architecture
  - ISDN Protocols

## SNMP

- SNMP (Simple Network Management Protocol)
  - Management protocol
  - To ensure that device is working well
  - Locating the problem and adjusting
  - It operates on top of UDP



## Additional Network Protocols

- TCP Applications
  - Client-Server Model
  - Virtual Terminal
  - TELNET
  - File Transfer
  - SNMP
- **Integrated Services Digital Network (ISDN)**
  - ISDN Architecture
  - ISDN Protocols

## Additional Network Protocols

- TCP Applications
  - Client-Server Model
  - Virtual Terminal
  - TELNET
  - File Transfer
  - SNMP
- Integrated Services Digital Network (ISDN)
  - **ISDN Architecture**
  - ISDN Protocols

## ISDN Architecture

- ISDN (Integrated Service Digital Network)
  - A digital communication
    - B channel – 64 kbps
    - D channel – 16 kbps
  - E.g. 2B+D :- B channel for data or voice and D for control

## ISDN Architecture

- T1 using 23B + D
  - 23 B channel
  - 1 D Channel
- European standard 30B + D
  - 30 B Channel
  - 1 D channel
  - 2.048 Mbps

## Additional Network Protocols

- TCP Applications
  - Client-Server Model
  - Virtual Terminal
  - TELNET
  - File Transfer
  - SNMP
- Integrated Services Digital Network (ISDN)
  - ISDN Architecture
  - **ISDN Protocols**

## ISDN Protocols

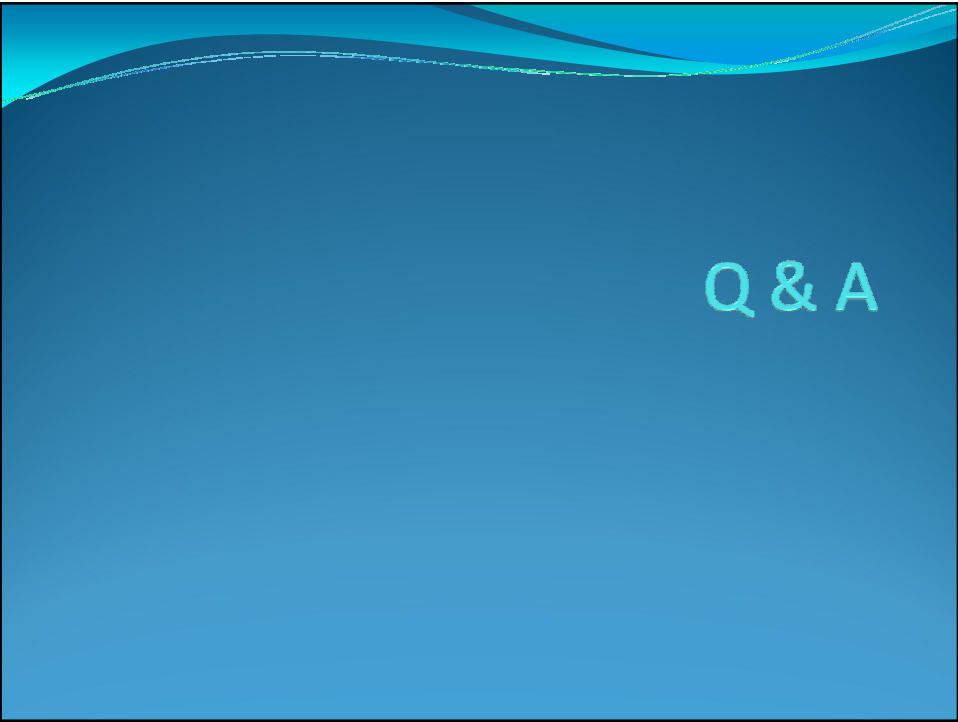
- ISDN basic service which support
  - Telephone
  - Fax
  - PC
  - Video Conference
  - Control
  - Alarm system
  - Water meter
  - Electric meter
  - ....

## ISDN Protocols

- In-band Signaling
  - E.g. dial number from telephone is sent via D channel
- Out-of-band Signaling
  - E.g. transmitting voice or data over B channel
  - In B channel, treating all bits as pure data.
  - Different protocol will be transparent to ISDN

## Reference

- <http://www.cs.colostate.edu/helpdocs/ftp.html>



Q & A